

## UNIT

## 18

## Organization of Tissues

 Learning Objectives

After completing this lesson, students will be able:

- know the different types of tissues and their morphology.
- identify how tissues are organized in specific patterns to form organs.
- understand how tissues perform life activities in plants and animals.
- gain knowledge about the structural organisation of tissues.
- get familiarized with the process, types and significance of cell division.



## Introduction

Unicellular organisms like bacteria and protozoans are made of single cells. On the other hand, multicellular organisms, like higher plants and animals, are composed of millions of different types of cells that are grouped into different levels of organization. Multicellular organisms have specialized cells, tissues, organs and organ systems that perform specific functions.

Group of cells positioned and designed to perform a particular function is called a tissue. An organ is a structure made up of a collection of tissues that carry out specialized functions. For example, in plants the root, stem and leaves are organs, whereas xylem and phloem are tissues. Similarly in animals stomach, for example, is an organ that consists of tissues made of epithelial cells, gland cells and muscle cells. In this chapter, you will learn about different types of plant and animal tissues and how they are modified to coordinate life activities.

## 18.1 Plant Tissues

Plants are made up of vegetative and reproductive tissues. In general, plant tissues are classified into two types namely:

- i. Meristems or Meristematic tissues.
- ii. Permanent tissues

### 18.1.1 Meristematic Tissues (Meristems)

The term 'meristem' is derived from the greek word 'Meristos' which means divisible or having cell division activity. Meristematic tissues are group of immature cells that are capable of undergoing cell division. In plants, meristem is found in zones where growth can take place. Example: apex of stem, root, leaf primordia, vascular cambium, cork cambium, etc.,

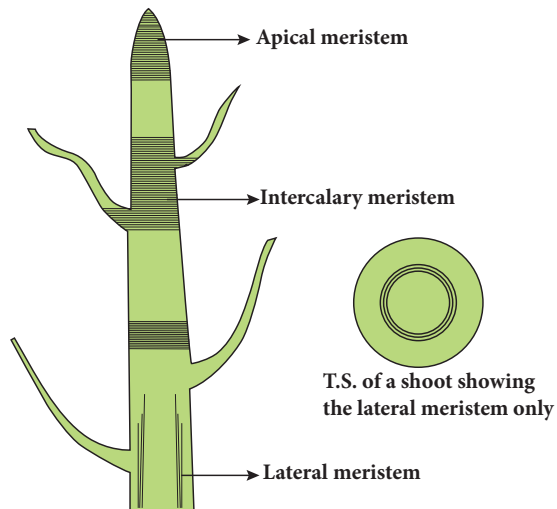
#### Characteristic features:

- a) They are living cells.
- b) Cells are small, oval, polygonal or round in shape.
- c) They are thin walled with dense cytoplasm, large nuclei and small vacuoles.

- d) They undergo mitotic cell division.  
e) They do not store food materials.

### A. Types of Meristems based on position

On the basis of their position in the plant, meristems are of three types: Apical meristem, Intercalary meristem and Lateral meristem.



**Figure 18.1** Longitudinal section of shoot apex showing location of meristems and young leaves.

**Apical meristem:** These are found at the apices or growing points of root and shoot and bring about increase in length.

**Intercalary meristem:** It lies between the region of permanent tissues and is part of primary meristem. It is found either at the base of leaf (e.g. pinus) or at the base of internodes (e.g. grasses).

**Lateral Meristem:** These are arranged parallel and causes the thickness of the plant part.

### B. Functions

Meristems are actively dividing tissues of the plant, that are responsible for primary (elongation) and secondary (thickness) growth of the plant.

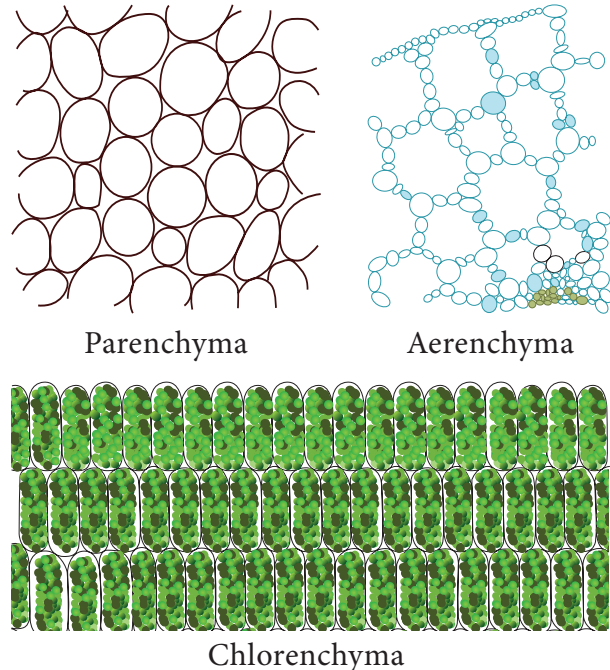
#### 18.1.2 Permanent Tissues

Permanent tissues are those in which, growth has stopped either completely or for the time being. At times, they become meristematic partially or wholly. Permanent tissues are of two types, namely: simple tissue and complex tissue.

### A. Simple Tissues

Simple tissues are homogeneous tissues composed of structurally and functionally similar cells. eg., Parenchyma, Collenchyma and Sclerenchyma.

**Parenchyma:** Parenchyma are simple permanent tissues composed of living cells. Parenchyma cells are thin walled, oval, rounded or polygonal in shape with well developed spaces among them. In aquatic plants, parenchyma possesses intercellular air spaces, and is named as Aerenchyma. When exposed to light, parenchyma cells may develop chloroplasts and are known as Chlorenchyma.



**Figure 18.2** Types of Parenchyma

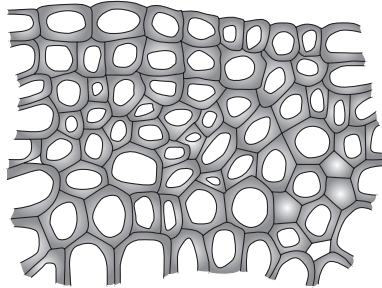
Parenchyma may store water in many succulent and xerophytic plants. It also serves the functions of storage of food reserves, absorption, buoyancy, secretion etc.,



In potato, parenchyma vacuoles are filled with starch. In apple, parenchyma stores sugar

**Collenchyma:** Collenchyma is a living tissue found beneath the epidermis. Cells are elongated with unevenly thickened walls.

Cells have rectangular oblique or tapering ends and persistent protoplast. They possess thick primary non-lignified walls. They provide mechanical support for growing organs.



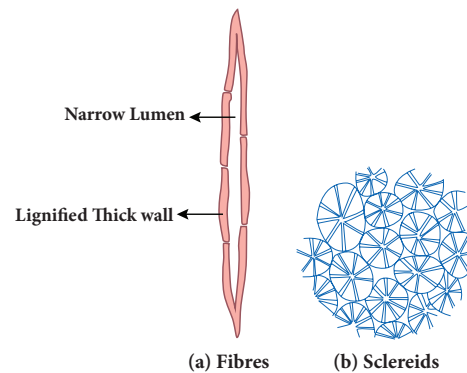
**Figure 18.3** Collenchyma

**Sclerenchyma:** Sclerenchyma consists of thick walled cells which are often lignified. Sclerenchyma cells are dead and do not possess living protoplasts at maturity. Sclerenchyma cells are grouped into fibres and sclereids.

Fibres are elongated sclerenchymatous cells, usually with pointed ends. Their walls are lignified. Fibres are abundantly found in many plants. The average length of fibres is 1 to 3 mm, however in plants like *Linum usitatissimum* (flax), *Cannabis sativa* (hemp) and *Corchorus capsularis* (jute), fibres are extensively longer, ranging from 20 mm to 550 mm.

Sclereids are widely distributed in plant body. They are usually broad, may occur in single or in groups. Sclereids are isodiametric, with lignified walls. Pits are prominent and seen along the walls.

Lumen is filled with wall materials. Sclereids are also common in fruits and seeds.



**Figure 18.4** Sclerenchyma (a) Fibres, (b) Sclereids

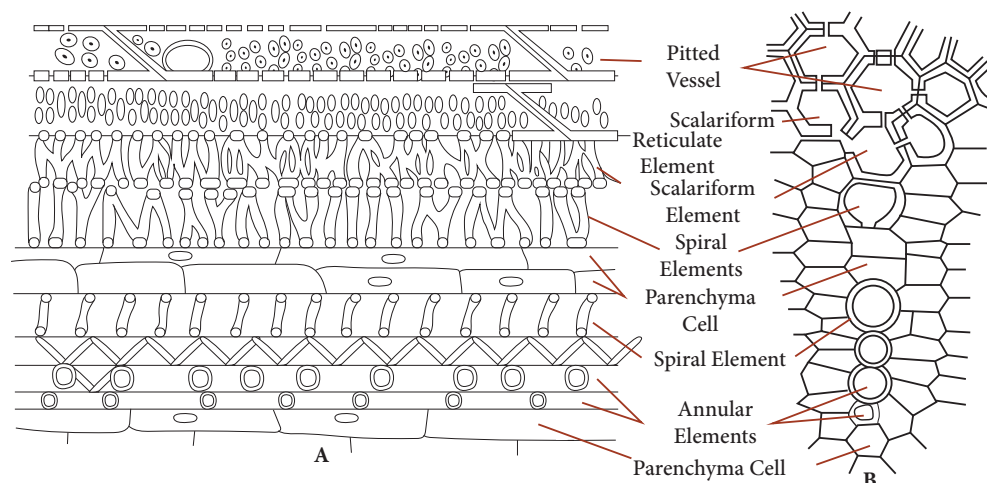
## B. Complex tissues

Complex tissues are made of more than one type of cells that work together as a unit. Complex tissues consist of parenchyma and sclerenchyma cells. However, collenchymatous cells are not present in such tissues. Common examples are xylem and phloem.

### i. Xylem

Xylem is a conducting tissue which conducts water, mineral nutrients upward from root to leaves. Xylem gives mechanical support to the plant body. Xylem is composed of: (i) xylem tracheids (ii) xylem fibres (iii) xylem vessels and (iv) xylem parenchyma.

**Xylem tracheids:** These are elongated or tube-like dead cells with hard, thick and



**Figure 18.5** A. xylem longitudinal section B. xylem transverse section

lignified walls. Their ends are tapering, blunt or chisel-like and devoid of protoplast. They have large lumen without any content. Their function is conduction of water and providing mechanical support to the plant.

**Xylem fibres:** These cells are elongated, lignified and pointed at both the ends. Xylem fibres provide mechanical support to the plant.

**Xylem vessels:** These are long cylindrical, tube like structures with lignified walls and wide central lumen. These cells are dead as these do not have protoplast. They are arranged in longitudinal series in which the partitioned walls (transverse walls) are perforated, and so the entire structure looks-like a water pipe. Their main function is to transport of water and also to provide mechanical strength.

**Xylem parenchyma:** These are living and thin walled cells. The main function of xylem parenchyma is to store starch and fatty substances.

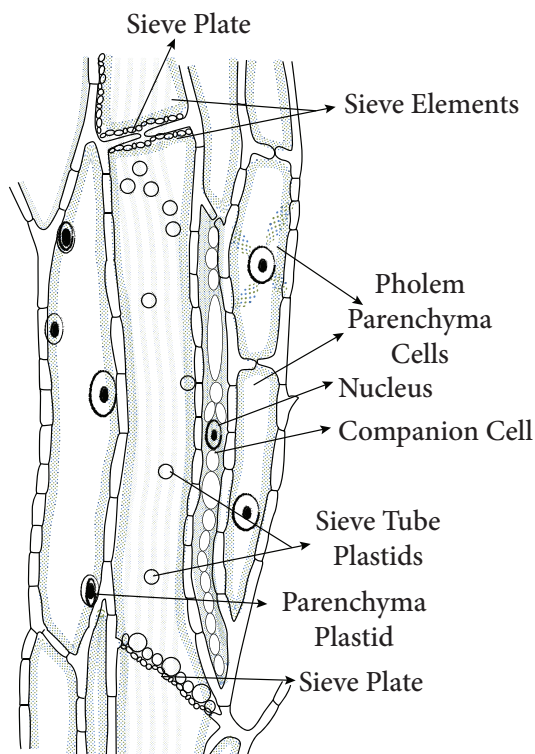
## ii. Phloem

Phloem is a complex tissue and consists of the following elements: Sieve elements, Companion cells, Phloem fibres, and Phloem parenchyma.

**Sieve elements:** The conducting elements of phloem are collectively called as Sieve elements. Sieve tubes are elongated, tube-like slender cells placed end to end. The transverse walls at the ends are perforated and are known as sieve plates. The main function of sieve tubes is translocation of food, from leaves to the storage organs of the plants.

**Companion cells:** These are elongated cells attached to the lateral wall of the sieve tubes. A companion cell may be equal in length to the accompanying sieve tube element or the mother cell may be divided transversely forming a series of companion cells.

**Phloem parenchyma:** The phloem parenchyma are living cells which have cytoplasm and nucleus. Their function is to store food materials.



**Figure 18.6** Longitudinal section of Phloem tissue

**Table 18.1** Differences between Xylem and Phloem.

Xylem	Phloem
Conducts water and minerals.	Conducts organic solutes or food materials.
Conduction is mostly unidirectional i.e., from roots to apical parts of the plant.	Conduction may be bidirectional from leaves to storage organs and growing parts or from storage organs to growing parts of plants.
Conducting channels are tracheids and vessels.	Conducting channels are sieve tubes.
Component of xylem include tracheid vessels, xylem parenchyma and xylem fibres.	Components are sieve elements, companion cells, phloem parenchyma and phloem fibres.



**Phloem fibers:** Sclerenchymatous cells associated with primary and secondary phloem are commonly called phloem fibers. These cells are elongated, lignified and provide mechanical strength to the plant body.

**Table 18.2** Differences between Meristematic tissue and Permanent tissue.

Meristematic tissue	Permanent tissue
Cell wall is thin and elastic.	Cell wall is thick.
Component cells are small, spherical or polygonal and undifferentiated.	Component cells are large, differentiated with different shapes.
Cytoplasm is dense, and vacuoles are nearly absent.	Usually large central vacuole is present in living permanent cells.
Intercellular spaces absent.	Intercellular spaces present.
Nucleus is large and prominent.	Nucleus is less conspicuous.
Cells grow and divide regularly.	Cells do not normally divide.
Provides mechanical support and elasticity to the plant body.	Provides only mechanical support.

## 18.2 Animal Tissues

An assemblage of one or more types of specialized cells held together with extracellular material constitute the tissue. The study of tissues is known as **Histology**.

**Simple tissue:** A group of cells that are similar in origin, form, structure and work together to perform a specific function.

**Compound tissue:** A group of cells different in their structure and function but co-ordinate to perform a specific function

Animal tissues can be grouped into four basic types on the basis of their structure and functions.

- Epithelial tissue.
- Connective tissue
- Muscular tissue
- Nervous tissue

### 18.2.1 Epithelial Tissues

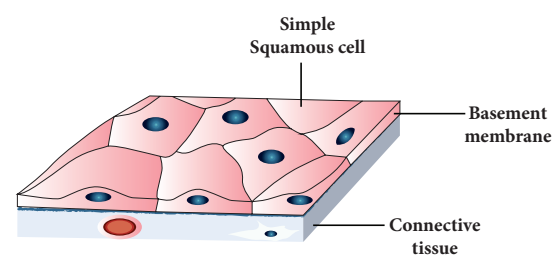
It is the simplest tissue composed of one or more layers of cells covering the external surface of the body and internal organs. The cells are arranged very close to each other with less extracellular material. Epithelial cells lie on a non-cellular basement membrane. The epithelial tissue generally lacks blood vessels. The epithelium is separated by the underlying connective tissue which provides it with nutrients. There are two types of epithelial tissues. **Simple epithelium** is composed of single layer of cells resting on a basement membrane. **Compound epithelium** is composed of several layers of cells. Only the cells of the deepest layer rest on the basement membrane.

#### Functions of epithelial tissues

- The skin which forms the outer covering of the body protects the underlying cells from drying, injury and microbial infections.
- They help in absorption of water and nutrients.
- They are involved in elimination of waste products.
- Some epithelial tissues perform secretory function (Secretion of sweat, saliva, mucus and enzymes).

#### A. Simple Epithelium

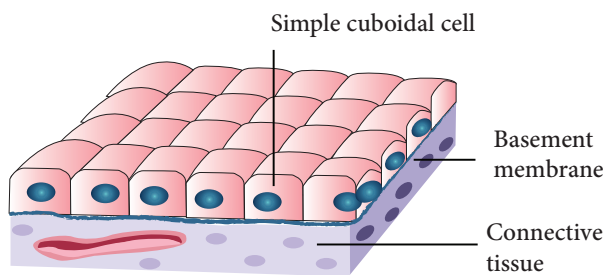
It is formed of **single layer** of cells. It forms a lining for the body cavities and ducts. Simple epithelium is further divided into following types.



**Figure 18.7** Squamous Epithelium

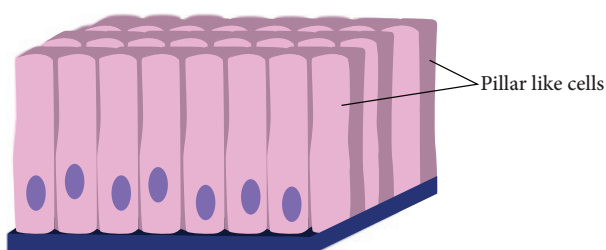
**Squamous Epithelium:** It is made up of thin, **flat** cells with prominent nuclei. These cells have irregular boundaries and bind with neighbouring cells. The squamous epithelium is also known as **pavement membrane**, which form delicate lining of the buccal cavity, alveoli of lungs, proximal tubule of kidneys and covering of the skin and tongue. It protects the body from mechanical injury, drying and invasion of germs.

**Cuboidal Epithelium:** It is composed of single layer of **cubical** cells. The nucleus is round and lies in the centre. This tissue is present in the thyroid vesicles, salivary glands, sweat glands and exocrine pancreas. It is also found in the intestine and tubular part of the nephron (kidney tubules) as microvilli that increase the absorptive surface area. Their main function is secretion and absorption.



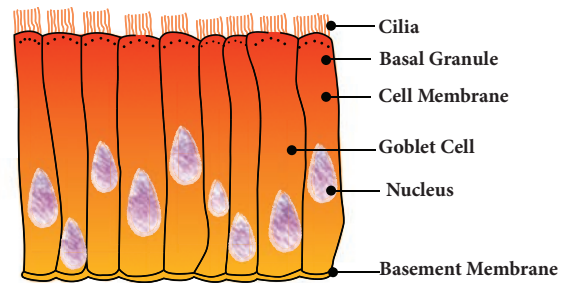
**Figure 18.8** Cuboidal Epithelium

**Columnar Epithelium:** It is composed of a single layer of **slender, elongated** and **pillar** like cells. Their nuclei are located at the base. It is found lining the stomach, gall bladder, bile duct, small intestine, colon, oviducts and also forms the mucous membrane. They are mainly involved in secretion and absorption.



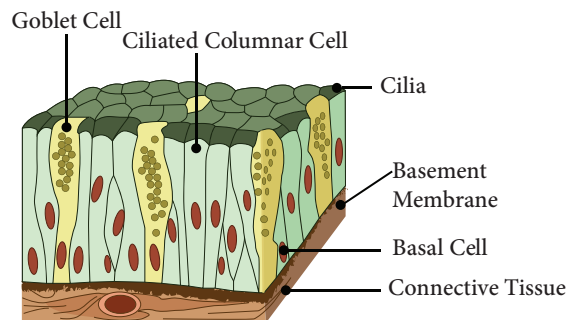
**Figure 18.9** Columnar Epithelium

**Ciliated Epithelium:** Certain columnar cells bear numerous delicate hair like out growths called **cilia** and are called ciliated epithelium. Their function is to move particles or mucus in a specific direction over the epithelium. It is seen in the trachea of wind-pipe, bronchioles of respiratory tract, kidney tubules and fallopian tubes of oviducts.



**Figure 18.10** Ciliated Epithelium

**Glandular Epithelium:** Epithelial cells are often modified to form **specialized gland** cells which secrete chemical substances at the epithelial surface. This lines the gastric glands, pancreatic tubules and intestinal glands.



**Figure 18.11** Glandular epithelium

## B. Compound Epithelium

It consists of **more than one layer** of cells and gives a **stratified appearance**. Hence, they are also known as stratified epithelium. The main function of this epithelium is to give protection to the underlying tissues against mechanical and chemical stress. They also cover the dry surface of the skin, the moist surface of the buccal cavity and pharynx.



Epithelial tissue in the skin functions as a water-proof membrane.

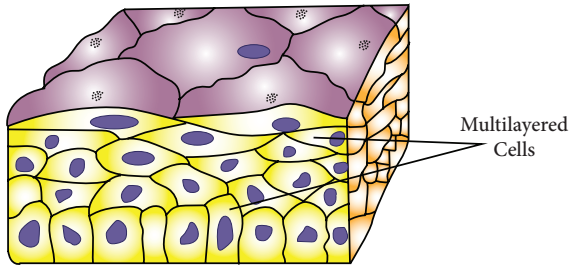


Figure 18.12 Compound Epithelium

### Activity 1

Rinse your mouth with water. Using a tooth pick or ice-cream stick, scrap superficial cells from inner side of the cheek and spread it on a clean glass slide. Dry the glass slide with the scrap cells taken from the inner side of cheek. Add two drops of methylene blue stain. Identify the cells under low and high power of the microscope.

### 18.2.2 Connective Tissues

It is one of the most abundant and widely distributed tissue. It provides **structural framework** and gives **support** to different tissues forming organs. It prevents the organs from getting displaced by body movements.

The components of the connective tissue are the intercellular substance known as the matrix, connective tissue cells and fibres. Connective tissue is classified as follows:

- Connective tissue proper (Areolar and Adipose tissue)
- Supportive connective tissue (Cartilage and Bone)

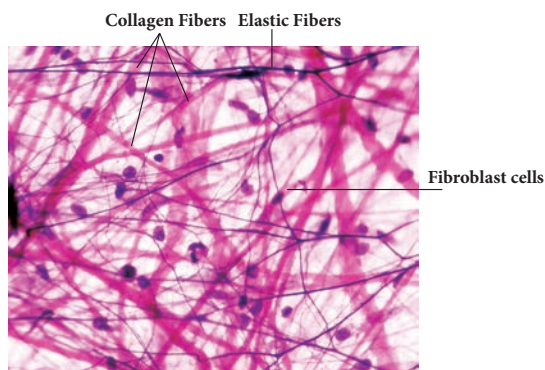


Figure 18.13 Areolar tissue

- Dense connective tissue (Tendons and Ligaments)
- Fluid connective tissue (Blood and Lymph)

#### i. Connective tissue proper:

Connective tissue proper consist of collagen fibres, elastin fibres and fibroblast cells.

**Areolar tissue:** It has cells and fibres loosely arranged in a semi-fluid ground substance called **matrix**. It takes the form of fine threads crossing each other in every direction leaving small spaces called areolae. It joins skin to muscles, fills space inside organs and is found around muscles, blood vessels and nerves. It helps in repair of tissues after injury and fixes skin to underlying muscles.

**Adipose Tissue:** Adipose tissue is the aggregation of **fat cells** or **adipocytes**, spherical or oval in shape. It serves as fat reservoir.

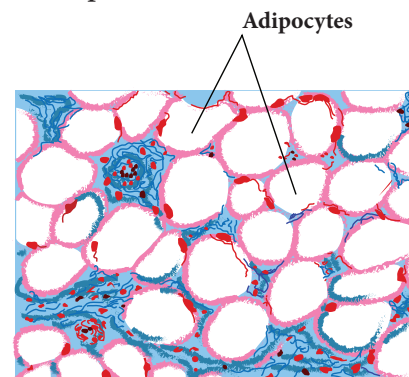


Figure 18.14 Adipose tissue

They are found in subcutaneous tissue, between internal organs around the heart and kidneys. They act as **shock absorbers** around the kidneys and eye balls. They also regulate the body temperature by acting as **insulator**.

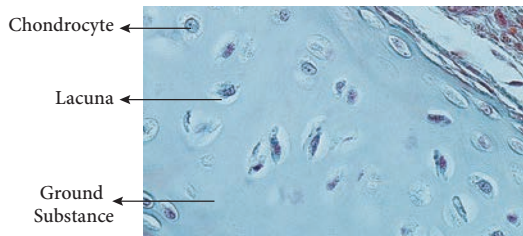
#### ii. Supportive Connective Tissue:

The supporting or skeletal connective tissues forms the endoskeleton of the vertebrate body which protect various organs and help in locomotion. The supportive tissues include cartilage and bone.

**Cartilage:** They are soft, semi-rigid, flexible and are less vascular in nature. The matrix is composed of large cartilage cells called **chondrocytes**. These cells are present in fluid filled spaces known as **lacunae**.

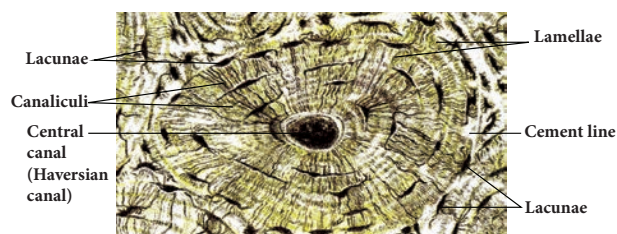


Cartilage is present in the tip of the nose, external ear, end of long bones, trachea and larynx. It provides support and flexibility to the body parts.



**Figure 18.15** Cartilage

**Bone :** It is solid, rigid and strong, **non-flexible** skeletal connective tissue. The matrix of the bone is rich in calcium salts and collagen fibres which gives the bone its strength. The matrix of the bone is in the form of concentric rings called **lamellae**. The bone cells present in lacunae are called **osteocytes**. They communicate with each other by a network of fine canals called **canaliculi**. The hollow cavities of spaces are called marrow cavities filled with **bone marrow**. They provide shape and structural framework to the body. Bones support and protect soft tissues and organs.

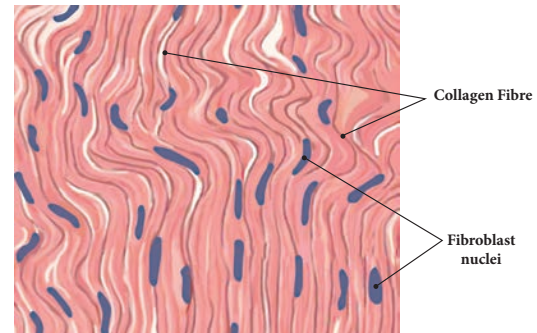


**Figure 18.16** T.S of Bone

### iii. Dense Connective Tissue:

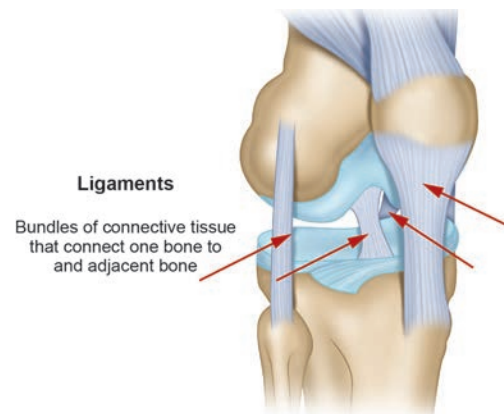
It is a fibrous connective tissue densely packed with fibres and fibroblasts. It is the principal component of tendons and ligaments.

**Tendons:** They are cord like, strong, structures that join skeletal muscles to bones. Tendons have great **strength** and **limited flexibility**. They consist of parallel bundles of collagen fibres, between which are present rows of fibroblasts.



**Figure 18.17** Tendon

**Ligaments:** They are **highly elastic** structures and have great strength which connect bones to bones. They contain very little matrix. They strengthen the joints and allow normal movement.



**Figure 18.18** Ligament

**DO YOU KNOW?** Sprain is caused by excessive pulling (stretching) of ligaments.

### iv. Fluid connective tissue:

The blood and the lymph are the fluid connective tissues which link different parts of the body. The cells of the connective tissue are loosely spaced and are embedded in an intercellular matrix.

#### a. Blood

Blood contains corpuscles which are red blood cells (**erythrocytes**), white blood cells (**leucocytes**) and **platelets**. In this fluid connective tissue, blood cells



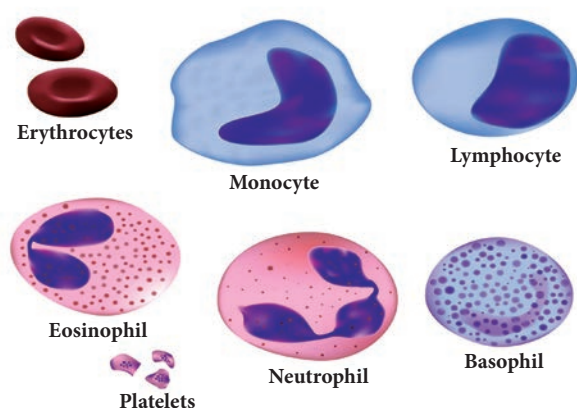


are present in a fluid matrix called **plasma**. The plasma contains inorganic salts and organic substances. It is a main circulating fluid that helps in the transport of nutrient substances.

**Red blood corpuscles (Erythrocytes):** The red blood corpuscles are circular, biconcave disc-like cells and **lack nucleus** when mature (mammalian RBC). They contain a respiratory pigment called **haemoglobin** which is involved in the transport of oxygen to tissues.

**White blood corpuscles (Leucocytes):** They are larger in size, contain **distinct nucleus** and are **colourless**. They are capable of amoeboid movement and play an important role in body's defense mechanism. They engulf or destroy foreign bodies. WBC's are of two types: Granulocytes and Agranulocytes. **Granulocytes** have irregular shaped nuclei and cytoplasmic granules. They include the **neutrophils, basophils** and **eosinophils**. **Agranulocytes** lack cytoplasmic granules and include the **lymphocytes** and **monocytes**.

**Blood platelets:** They are minute, anucleated, fragile fragments of giant bone marrow called **mega karyocytes**. They play an important role in **blood clotting** mechanism.



**Figure 18.19** Blood cells

### b. Lymph

Lymph is a colourless fluid filtered out of the blood capillaries. It consists of plasma and white blood cells. It mainly helps in the exchange of materials between blood and tissue fluids.

### 18.2.3 Muscular Tissues

Muscular tissues are made of muscle cells and form the major part of contractile tissue. They are composed of numerous **myofibrils**. Each muscle is made up of many long cylindrical fibres arranged parallel to one another.

According to their structure, location and functions there are three main types of muscles: Skeletal muscle (or) striated muscle, Smooth muscle (or) non-striated muscle and Cardiac muscle.

**Skeletal muscle:** These muscles are attached to the bones and are responsible for the body movements and are called skeletal muscles. They work under our control and are also known as **voluntary muscles**. The muscle fibres are elongated, cylindrical, unbranched with alternating dark and light bands, giving them the **striped** or **striated** appearance. They possess many nuclei (**multinucleate**). For example they occur in the biceps and triceps of arms and undergo rapid contraction.

**Smooth muscle:** These muscles are spindle shaped with broad middle part and tapering ends. There is a single centrally located nucleus (**uninucleate**). These fibrils do not bear any stripes or striations and hence are called **non-striated**. They are not under the control of our will and so are called **involuntary muscles**. The walls of the internal organs such as the blood vessels, gastric glands, intestinal villi and urinary bladder contain this type of smooth muscle.

**Cardiac muscle:** It is a special contractile tissue present in the heart. The muscle fibres are **cylindrical, branched** and **uninucleate**. The branches join to form a network called as **intercalated disc** which are unique distinguishing features of the cardiac muscles. The contraction of cardiac muscle is involuntary and rhythmic.

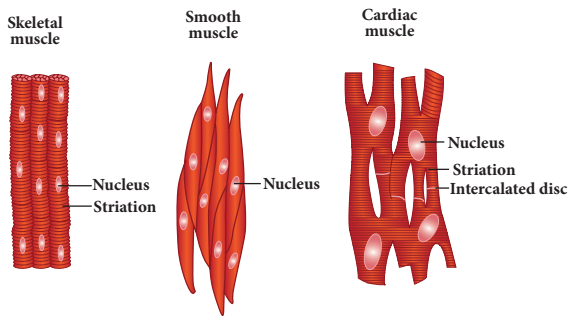


Figure 18.19 Muscle tissue

### 18.2.4 Nervous Tissue

Nervous tissue comprises of the nerve cells or neurons. They are the longest cells of the body. **Neurons** are the structural and functional units of the nervous tissue. The elongated and slender processes of the neurons are the nerve fibres. Each neuron consists of a **cell body** or **cyton** with nucleus and cytoplasm. The **dendrons** are short and highly branched protoplasmic processes of cyton. The **axon** is a single, long fibre like process that develops from the cyton and ends up with fine terminal branches.

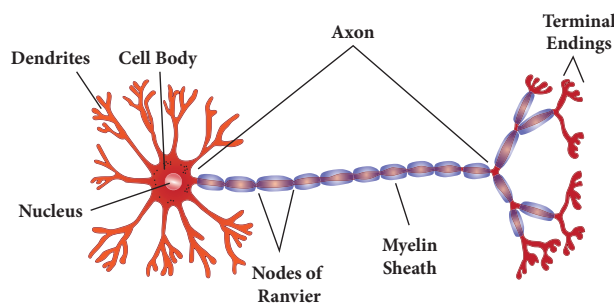


Figure 18.20 Neuron

#### INFO BIT

##### Age of our body cells

- Cells of the eye lens, nerve cells of cerebral cortex and most muscle cells last a life time but once dead are not replaced.
- Epithelial cells lining the gut last only about 5 days.

##### Duration of cell replacement

- Skin cells- about every 2 weeks.
- Bone cells- about every 10 years.
- Liver cells- about every 300 – 500 days.
- Red blood cells last for about 120 days and are replaced.

They have the ability to receive stimuli from within or outside the body and send signals to different parts of the body.



Nerve cells do not undergo cell division due to the absence of centrioles, but they are developed from glial cells by neurogenesis

## 18.3 Cell Division

Are you aware that all living organisms start their life from a single cell? You may wonder how a single cell then goes to form such a large organism. All cells reproduce by division and division of cells into daughter cells is called cell division.

### 18.3.1 Types of Cell Division

The three types of cell division that occur in animal cells are:

- I. Amitosis - Direct Division
- II. Mitosis - Indirect Division
- III. Meiosis - Reduction Division

#### I. Amitosis

It is the simplest mode of cell division and it occurs in unicellular animals, ageing cells and in foetal membranes. During amitosis, nucleus elongates first, and a constriction appears in it which deepens and divides the nucleus into two. Followed by this cytoplasm divides resulting in the formation of two daughter cells.

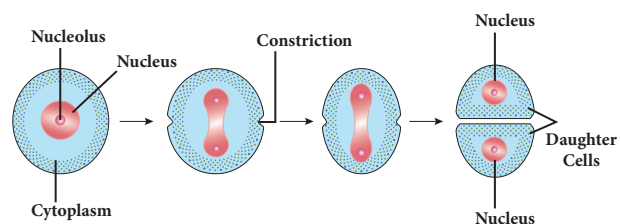
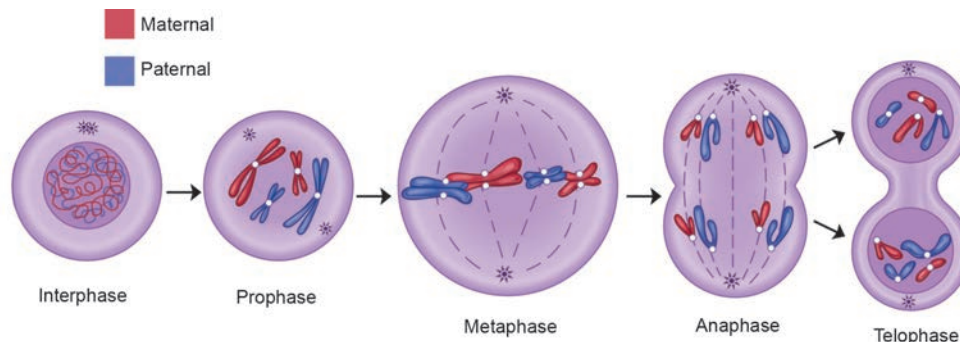


Figure 18.21 Amitosis

#### II. Mitosis

It was first discovered by Fleming in 1879. In this cell division one parent cell divides into two identical daughter cells, each with a nucleus having the same amount of DNA,



**Figure 18.22** Events of Mitosis

same number of chromosomes and genes as the parent cells. It is also called as **equational division**. Mitosis consists of two events, they are: 1. Karyokinesis 2. Cytokinesis

**Interphase:** It is the **resting phase** of the nucleus. It is the interval between two successive cell divisions. The cell prepares itself for the next cell division.

### 1. Karyokinesis

The division of the nucleus into two daughter nuclei is called Karyokinesis. It consists of four phases. They are: Prophase, Metaphase, Anaphase and Telophase.

**Prophase (pro-first):** During this stage chromosomes become short and thick and are clearly visible inside the nucleus. Centrosome splits into centrioles and occupy opposite poles of the cell. Each centriole is surrounded by **aster rays**. Spindle fibres appear between the two centrioles. Nuclear membrane and nucleolus disappear gradually.

**Metaphase (meta – after):** The duplicated chromosomes arrange on the equatorial plane and form the metaphase plate. Each chromosome gets attached to a spindle fibre by its centromere. The centromere of each chromosome divides into two each being associated with a chromatid.

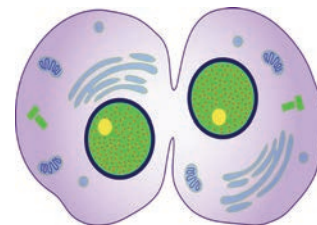
**Anaphase (ana – up, back):** The centromeres attaching the two chromatids divide and the two daughter chromatids of each chromosome separate and migrate towards the two opposite poles.

**Telophase (tele – end):** Each chromatid (or) daughter chromosome lengthens, becomes

thinner and turns into a network of chromatin threads. Spindle fibres breakdown and disappear. Nuclear membrane and nucleolus reappear in each daughter nucleus.

### 2. Cytokinesis

The division of the cytoplasm into two daughter cells by constriction of the cell membrane is called cytokinesis.



**Figure 18.23** Cytokinesis

### Significance of Mitosis

1. This equational division results in the production of diploid daughter cells ( $2n$ ) with equal distribution of genetic material (DNA).
2. In multicellular organisms growth, organ development and increase in body size are accomplished through the process of mitosis
3. Mitosis helps in repair of damaged and wounded tissues by renewal of the lost cells.

### III. Meiosis

The term meiosis was coined by Farmer in 1905. It is the kind of cell division that produces the sex cells or the gametes. It is also called reduction division because the chromosome number is reduced to haploid ( $n$ ) from diploid ( $2n$ ). Meiosis produces four daughter cells from a parent cell.



Meiosis consists of two divisions. They are:

- **Heterotypic Division** or First Meiotic Division
- **Homotypic Division** or Second Meiotic Division

### A. Heterotypic division

It divides the diploid cell into two haploid cells. The daughter cells resulting from this division are different from the parent cell in the chromosome number (Heterotypic). This consists of 5 stages:

- a. Prophase I
- b. Metaphase I
- c. Anaphase I
- d. Telophase I
- e. Cytokinesis I

#### a. Prophase I

Prophase I takes a longer duration and is sub divided into five stages. They are: Leptotene, Zygotene, Pachytene, Diplotene and Diakinesis.

**Leptotene:** The chromosomes become uncoiled and assume long thread like structures and take up a specific orientation inside the nucleus. They form a **bouquet stage**.

**Zygotene (Zygon-adjointing):** Two homologous chromosomes approach each other and begin to pair. Pairing of homologous chromosomes is called as **synapsis**.

**Pachytene (Pachus-thick):** The chromosomes are visible as long paired twisted threads. The pairs so formed are called **bivalents**. Each bivalent now contains four chromatids (**tetrad stage**).

Homologous chromosomes of each pair begin to separate. They do not completely separate, but remain attached together at one or more points by X-shaped arrangements known as **chiasmata**. The chromatids break at these points and the broken segments may be interchanged (crossing over). As a result, the **genetic recombination** takes place.

**Diplotene:** Each individual chromosome of each bivalent begins to split longitudinally into two similar chromatids. The homologous chromosomes repel each other and separate. Chiasmata begin to move along the length of the chromosome from the centromere towards the end resulting in **terminalization**.

**Diakinesis:** The paired chromosomes are shortened and thickened. The nuclear membrane and nucleolus begin to disappear. Spindle fibres make their appearance.

#### b. Metaphase I

The chromosomes move towards the equator and finally they orient themselves on the equator. The two chromatids of each chromosome do not separate. The centromere does not divide.

#### c. Anaphase I

Each homologous chromosome with its two chromatids and undivided centromere move towards the opposite poles of the cell. This stage of the chromosome is called **Diad**.

#### d. Telophase I

The haploid number of chromosomes after reaching their respective poles become uncoiled

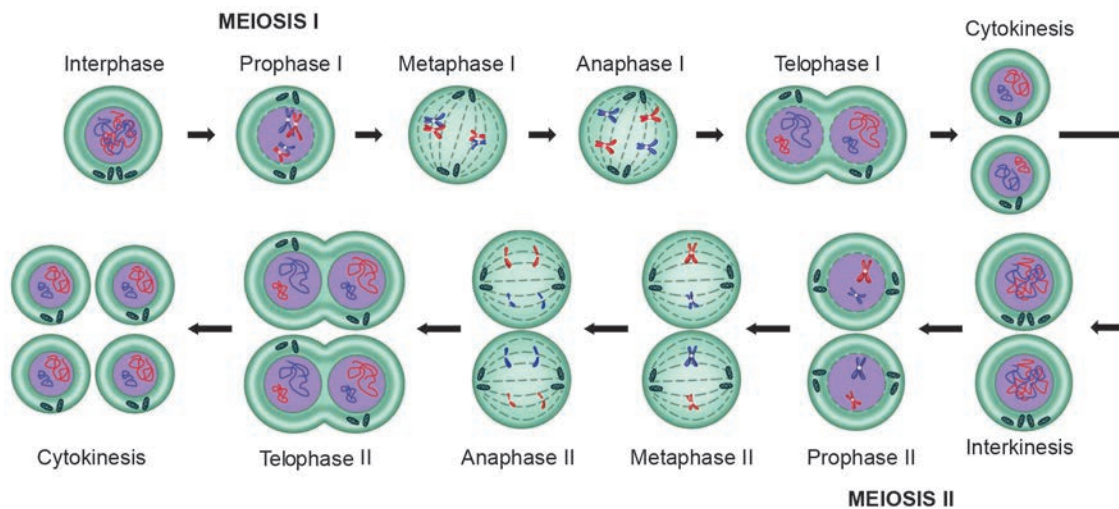


Figure 18.24 Events of Meiosis



and elongated. The nuclear membrane and the nucleolus reappear and thus two daughter nuclei are formed.

**e. Cytokinesis I:** The cytoplasmic division occurs and two haploid cells are formed.

### B. Homotypic Division

In this division, the two haploid cells formed during first meiotic division divide into four haploid cells. The daughter cells are similar to parent cell in the chromosome number (Homotypic). It consists of five stages.

- |                     |                   |
|---------------------|-------------------|
| a. Prophase – II    | b. Metaphase – II |
| c. Anaphase – II    | d. Telophase – II |
| e. Cytokinesis – II |                   |

**a. Prophase II:** The centriole divides into two, each one moves to opposite poles. Asters and spindle fibres appear. Nuclear membrane and nucleolus disappear.

**b. Metaphase II:** The chromosomes get arranged on the equator. Two chromatids are separated.

**c. Anaphase II:** The separated chromatids become daughter chromosomes and move to opposite poles

**d. Telophase II:** The daughter chromosomes are centered. The nuclear membrane and the nucleolus appear.

**e. Cytokinesis II:** Two cells are formed from each haploid daughter cell, resulting in the formation of four cells with haploid number of chromosomes.

### Significance of Meiosis

- The constant number of chromosomes in a given species is maintained by meiotic division.
- Genetic variation is produced due to crossing over within the species which is transmitted from one generation to next generation.

**Table 18.3** Differences between Mitosis and Meiosis

Mitosis	Meiosis
Occurs in somatic cells.	Occurs in reproductive cells.
Involved in growth and occurs continuously throughout life.	Involved in gamete formation only during the reproductively active age.
Consists of single division.	Consists of two divisions.
Two diploid daughter cells are formed.	Four haploid daughter cells are formed.
The chromosome number in the daughter cell is similar to the parent cell (2n).	The chromosome number in the daughter cell is just half (n) of the parent cell.
Identical daughter cells are formed.	Daughter cells are not similar to the parent cell and are randomly assorted.

### Points to Remember

- ❖ In general plant tissues are classified into two types namely Meristems or Meristematic tissues and Permanent tissues.
- ❖ Permanent tissues are of two types: simple tissue and complex tissue.
- ❖ Simple tissues are homogeneous-composed of structurally and functionally similar cells. eg., Parenchyma, Collenchyma and Sclerenchyma.
- ❖ Complex tissues are made of more than one type of cells that work together as a unit. They are Xylem and Phloem
- ❖ Animal tissues can be grouped into four basic types on the basis of their structure and functions. Epithelial tissue, Connective tissue, Muscular tissue and Nervous tissue.
- ❖ Simple epithelium formed of single layer of cells is divided into following types. They are squamous epithelium cuboidal epithelium, columnar epithelium, ciliated epithelium and glandular epithelium
- ❖ Compound Epithelium consists of more than one layer of cells and gives a stratified appearance.
- ❖ The three types of cell division that occur in animal cells are Amitosis, Mitosis and Meiosis.

**A-Z GLOSSARY**

<b>Bivalent</b>	Homologous chromosomes before their duplication in meiosis.
<b>Centromere</b>	kinetochore or primary constriction.
<b>Chiasma</b>	Point of contact and interchange between chromatids of two homologous chromosomes.
<b>Chromatids</b>	Two identical longitudinal halves of a chromosome which share a common centromere with a sister chromatid.
<b>Diploid</b>	Cell having two complete sets of chromosomes.
<b>Haploid</b>	Cell having a single complete set of chromosome.
<b>Interphase</b>	Resting phase of the cell between two cell divisions.
<b>Isodiametric</b>	Having equal diameter of cells or other structures.
<b>Osteocytes</b>	Bone cells present between the lamellae in fluid filled spaces called lacunae.
<b>Synapsis</b>	Pairing of homologous chromosomes during meiosis.
<b>Tetrad</b>	Four haploid cells arising from meiosis formed from four associated chromatids during synapsis.

**TEXTBOOK EXERCISES****I. Choose the correct answer.**

- The tissue composed of living thin walled polyhedral cell is
  - parenchyma
  - pollenchyma
  - pclerenchyma
  - None of above
- The fibres consists of
  - parenchyma
  - sclerenchyma
  - collenchyma
  - None of above
- Companion cells are closely associated with
  - sieve elements
  - vessel elements
  - trichomes
  - guard cells.
- Which of the following is a complex tissue?
  - Parenchyma
  - Collenchyma
  - Xylem
  - Sclerenchyma
- Aerenchyma is found in
  - epiphytes
  - hydrophytes
  - halophytes
  - xerophytes
- Smooth muscles occur in
  - uterus
  - artery
  - vein
  - All of the above.

- Nerve cell does not contains

- axon
- nerve endings
- tendons
- dendrites

**II. Match the following.**

Sclereids	Chlorenchyma
Chloroplast	Sclerenchyma
Simple tissue	Collenchyma
Companion cell	Xylem
Trachieds	Phloem

**III. Fill in the blanks.**

- \_\_\_\_\_ tissues provide mechanical support to organs.
- Parenchyma, collenchyma, Sclerenchyma are \_\_\_\_\_ type of tissue.
- \_\_\_\_\_ and \_\_\_\_\_ are complex tissues.
- Epithelial cells with cilia are found in \_\_\_\_\_ of our body.
- Lining of small intestine is made up of \_\_\_\_\_.

#### IV. State whether true or false. If false, correct the statement.

1. Epithelial tissue is protective tissue in animal body.
2. Bone and cartilage are two types of areolar connective tissues.
3. Parenchyma is a simple tissue.
4. Phloem is made up of tracheids.
5. Vessels are found in collenchyma.

#### V. Answer briefly.

1. What are intercalary meristems? How do they differ from other meristems?
2. What is complex tissue? Name the various kinds of complex tissues.
3. Mention the most abundant muscular tissue found in our body. State its function.
4. What is skeletal connective tissue? How is it helpful in the functioning of our body?
5. Why should gametes be produced by meiosis during sexual reproduction?
6. In which stage of mitosis the chromosomes align in an equatorial plate? How?

#### VI. Answer in detail.

1. What are permanent tissues? Describe the different types of simple permanent tissues.
2. Write about the elements of Xylem.
3. List out the differences between mitosis and meiosis.

#### VII. Higher Order Thinking Skills.

1. What is the consequence that occur if all blood platelets are removed from the blood?
2. Which are not true cells in the blood? Why?



#### REFERENCE BOOKS

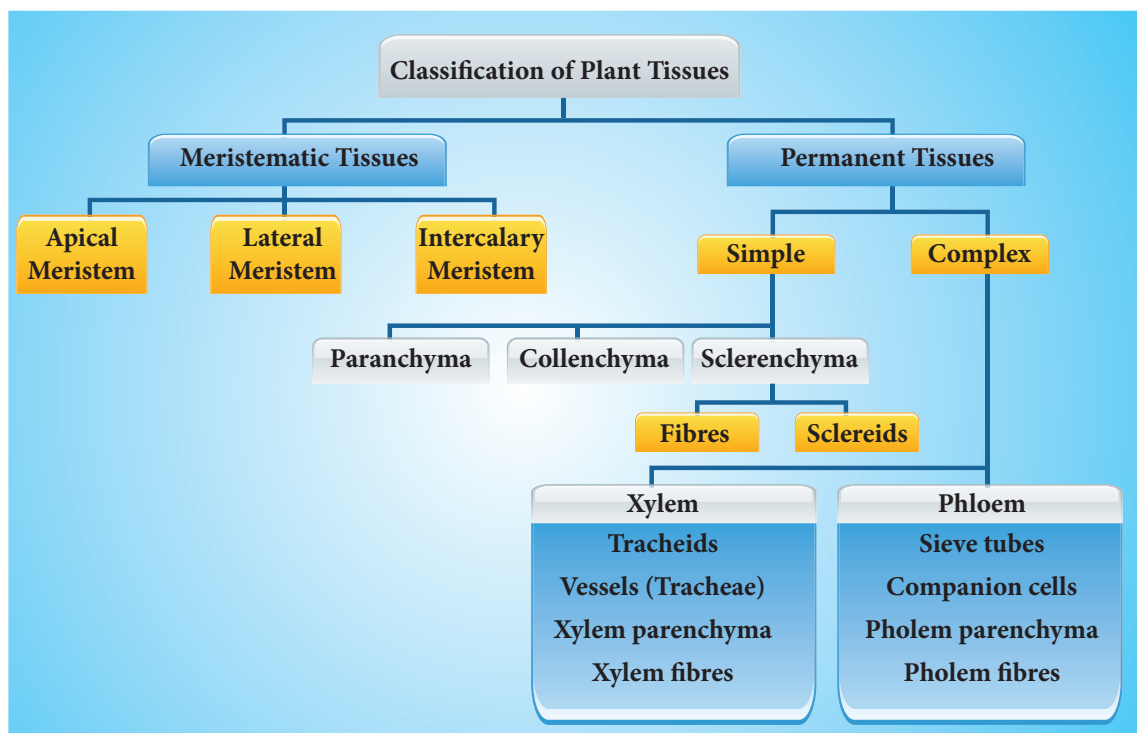
1. Pandey B.P. -Plant Anatomy. S.Chand and Company Ltd, New Delhi.
2. Verma P.S. and Agarwal V.K. -Cytology. S.Chand and Company Ltd, New Delhi.

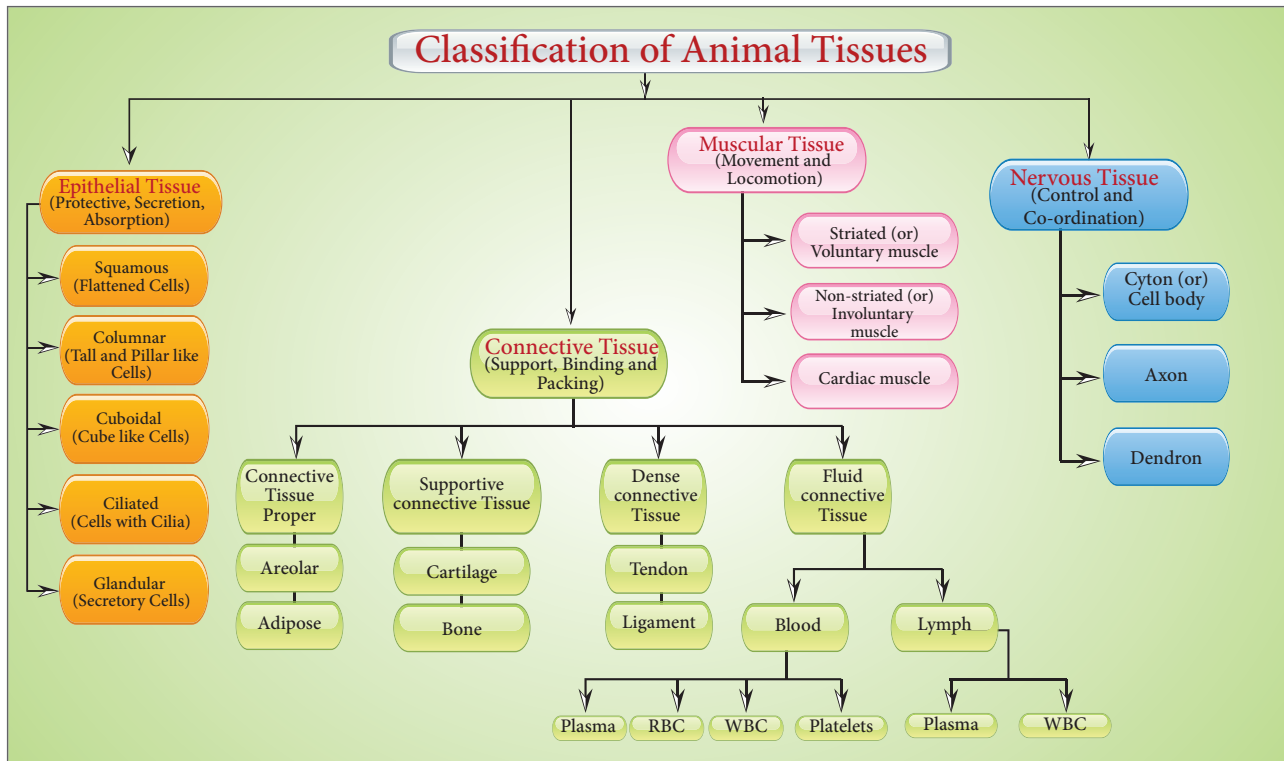


#### INTERNET RESOURCES

- <https://www.britannica.com/science>  
<https://biologydictionary.net>

### Concept Maps





## ICT CORNER

## Tissues and Organs

Explore this activity to know about the various types of tissues.

- Step 1:** Copy and paste the link given below or type the URL in the browser. Allow 'Adobe Flash Player' to run in the system.
- Step 2:** Then choose an organ from the list to know about the tissues that are in a particular organ.
- Step 3:** Keep selecting the tissues by clicking the 'Use this' option, if you need that particular tissue for that organ.
- Step 4:** Once you finish selecting the tissues you will find a pop-up called 'Happy with this choice.' Click on it to know whether your choice is correct or you should try again. In this way you can build different organs.

### Browse in the link:

URL: <https://www.centreofthecell.org/learn-play/games/build-an-organ/>

